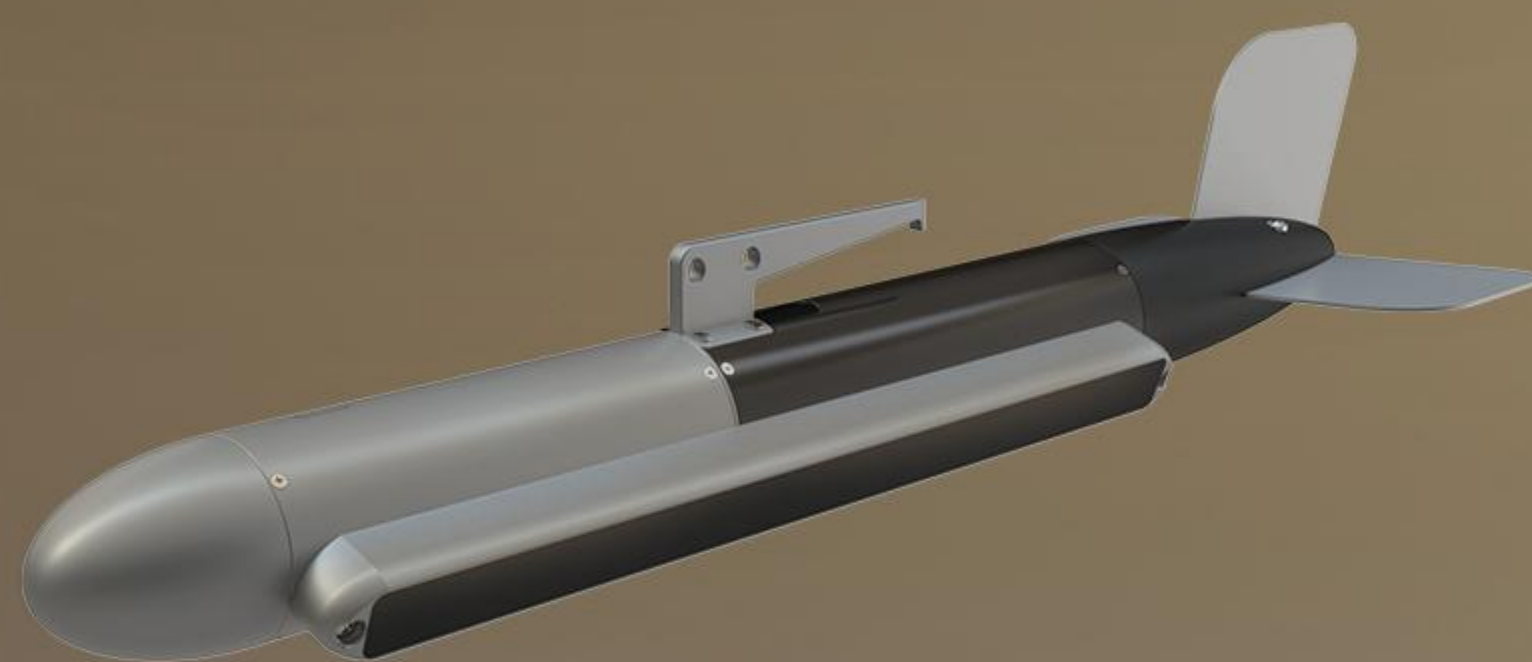


Hydro-Tech SS900T

High Resolution Side Scan Sonar



Easy Deployment and Suitable for Various Platform



Small Size

and Light Weight

The key requirements of emergency application are rapid response. So we control the overall weight of SS900T less than 10kg in order to have it easy for hand carry and implement onto various types of inflatable boats, speed boats and other kinds of platforms. It is extremely portable and one person can handle it smoothly.



High Definition

and Clear Target in View

Innovative image equalization technology is adopted to enhance image contrast and present the terrain background image in high-definition. With the latest adaptive waveform adjustment technology and



Easy Operation

and Quick to Use

We simplify the installation procedure to 3 steps and shorten the preparation into 2 minutes. So that everybody after training can get it ready and put SS900T into usage rapidly. Every second is the time to save and rescue from loss.



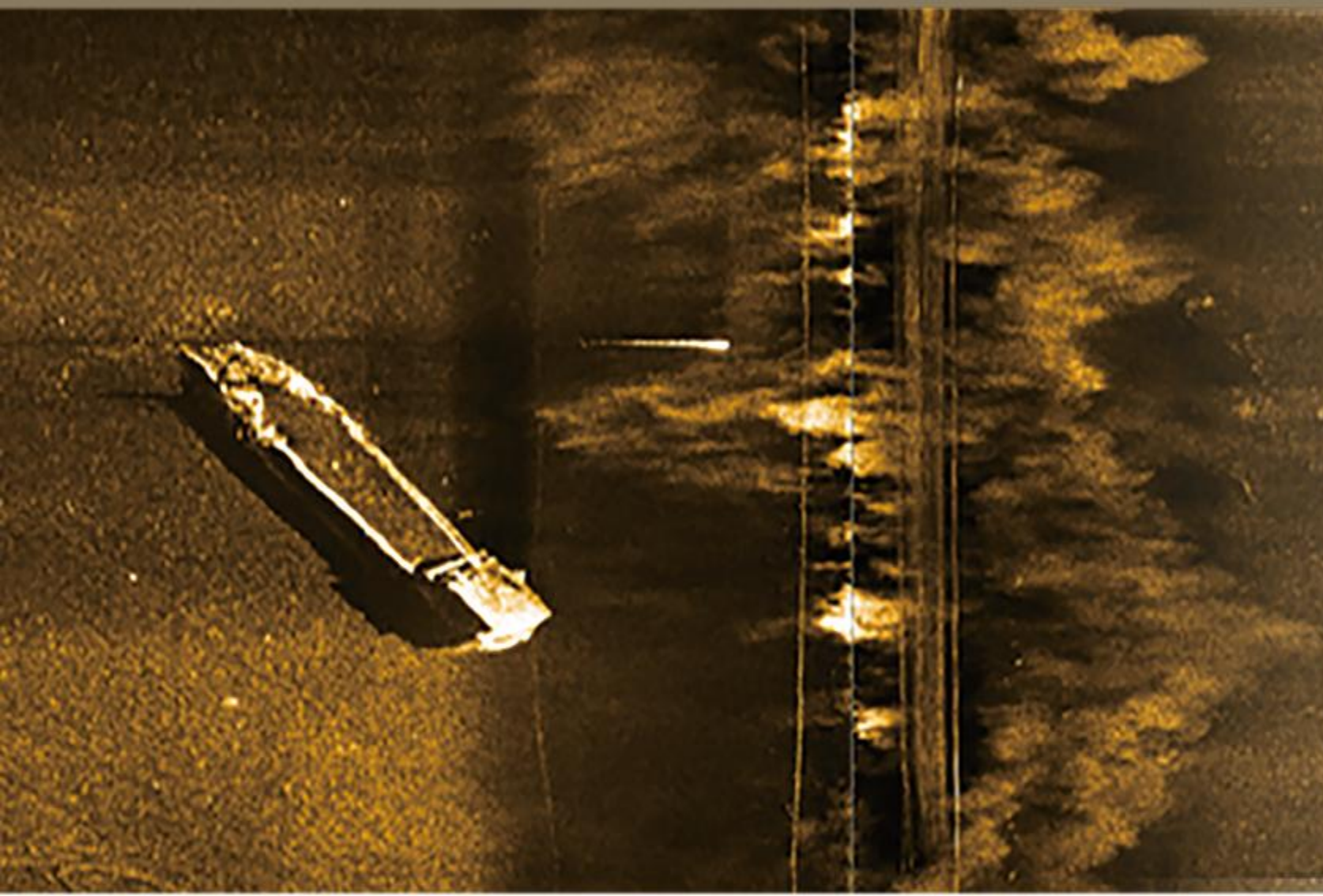
Hydro-Tech

Beijing Hydro-Tech Matine Technology Co.,Ltd

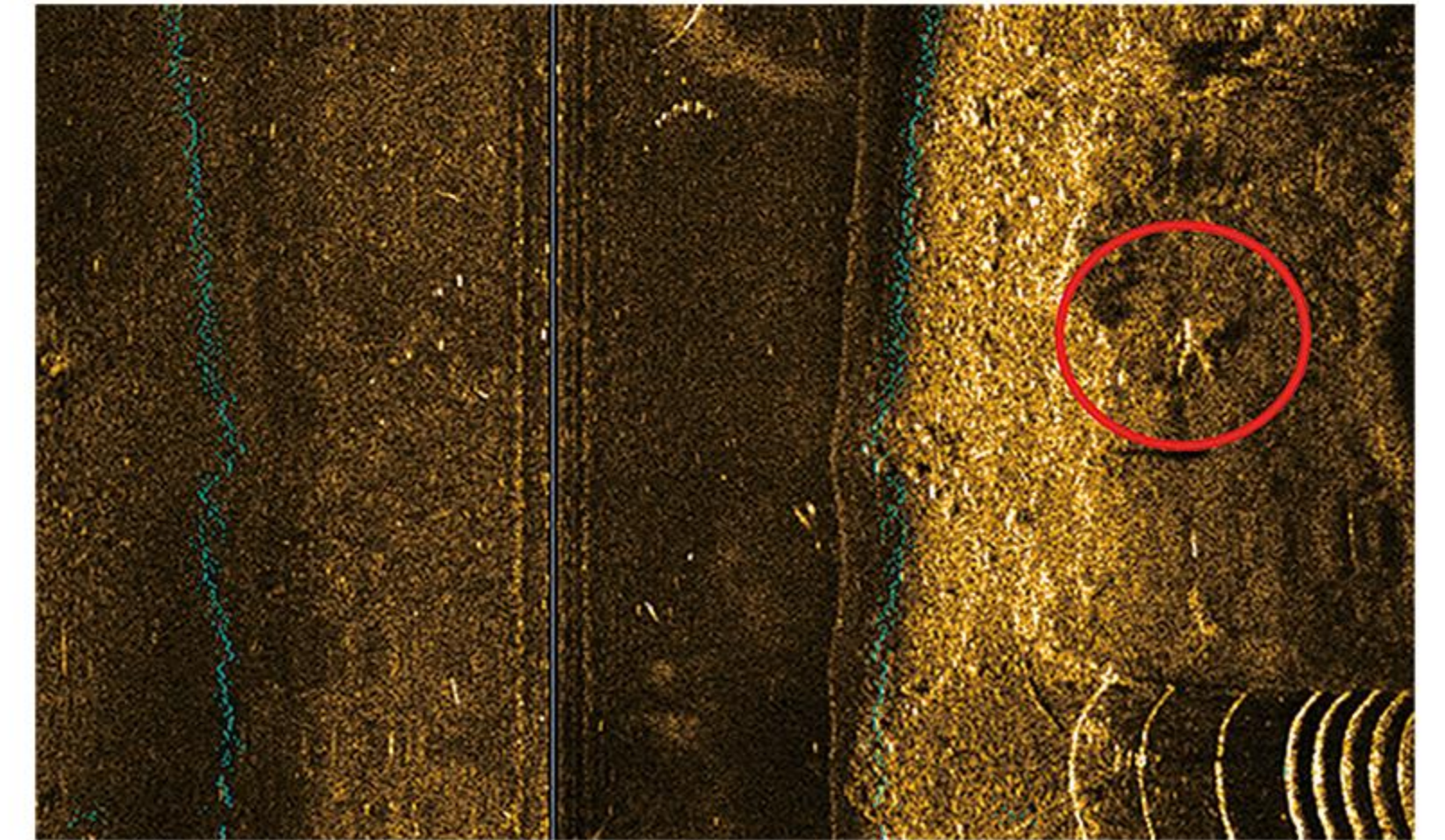
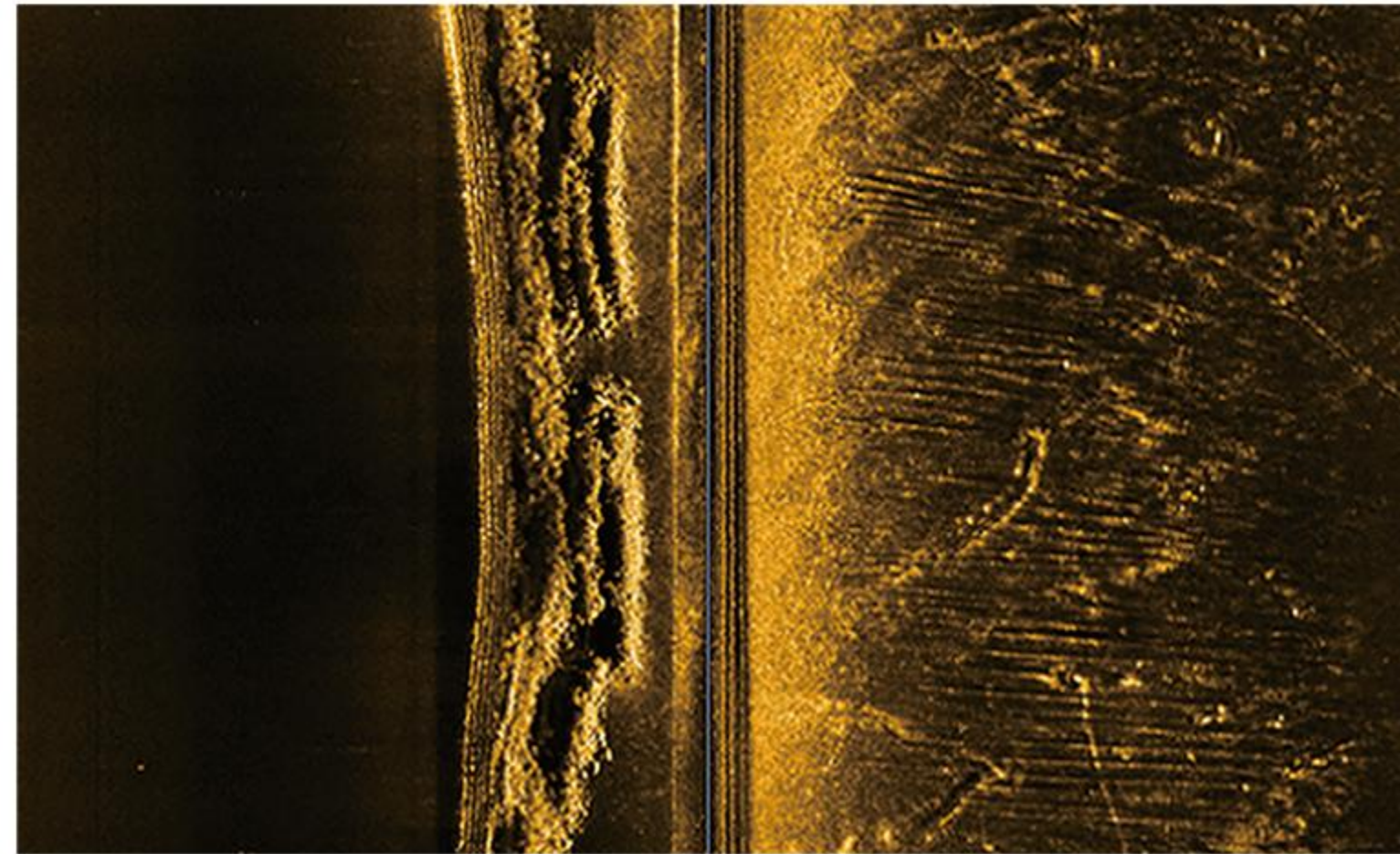


◀ Learn more

Hydro-Tech SS900T High Resolution Side Scan Sonar



SS900T is a towfish side scan sonar specifically designed for emergency and rescue application. With the leading self-adaption wave adjustment technology combining broadband signal processing and image equalization technology, SS900T can clearly scan various underwater small targets and complex structures. So it had been widely used in rescue teams.



Drawing

- Integrated application of high-performance underwater imaging systems in various engineering inspection fields;
- All kinds of underwater small targets, underwater complex structures and underwater fields are required Application areas of high-definition imaging;
- Application in the field of emergency rescue and public safety;

Scenario



Emergency rescue



Dark tube troubleshooting



Engineering inspection



Channel obstruction detection



Technical Specifications

Working Frequency:	900kHz
Maximum Slope Range:	75m @900kHz
Parallel Beam Width:	0.2° @900kHz
Vertical Beam Width:	50°
Along Track Resolution:	0.07m@20m;0.17m@50m;0.26m@75m;
Across Track Resolution:	1cm@900kHz
Signal Type:	CW/Chirp (Auto-adaptive)
Max. Working Depth:	300m
Size:	76cm×23.5cm×14.6cm (L×W×H)
Weight:	2.7kg
Power Supply:	DC10V-36V
Power Consumption:	10-15W
Deck Interface:	100M Ethernet
Software :	HydorSonar Display & Control Software Compatible with Hypack & SonarWiz

All functions and specifications above are subject to change without notice.